

ORIENT
apex 
LUXURY LIVING

Zenith of premier high-end living

apoe

PROJECT OVERVIEW



GROUP HOUSING OF
24 2 BHK / 3 BHK Luxury Apartments
& Penthouses
with Individual Terrace

- 100% Power Back up except power points (AC, Geyser, Refrigerator)
- Two V3F automatic lifts & Mechanical Car Parking Systems
- Provision of chimney
- Centrally softening water plant
- Centrally R/o Water for Kitchen
- LPG Gas Pipe provision from ground floor
- Adequate Fire Fighting System with Fire alarm
- Round the Clock water supply
- Video Door Phones, Intercom & Hi Speed Wi Fi Facility in all Flats
- Common Toilet at Stilt level for drivers & servants
- Round the Clock securities & Garbage Chute
- Ramp for Handicapped
- Children Play area/Party area

A WORLD OF
EXCELLENCE



only for them,

comes a home that stretches far beyond the parameter of a home,
and engulfs a luxury that re-defines living.

HOME with SPACE & GRACE

Life is known to be partial towards those who enjoy living it to the fullest. In all its grandeur, abundance
and majesty. These are the select few who draw admiration and who are equally drawn to things
which promise glory.



*a new way
of extraordinary Living*

PROJECT OVERVIEW

GROUP HOUSING OF
24 2 BHK 3 BHK Luxury Apartments
& Penthouses
with Individual Terrace

- 100% Power Backup, except power points (AC, Geyser, Refrigerator)
- Two VVF automatic lifts & Mechanical Car Parking Systems
- Provision of chimney
- Centrally softening water plant
- Centrally R/o Water for Kitchen
- LPG Gas Pipe provision from ground floor
- Adequate Fire Fighting System with Fire alarm
- Round the Clock water supply
- Free Door phones, Intercom & Hi Speed Wi Fi Facility in all Flats
- Common Toilet at Stilt level for drivers & servants
- Round the Clock securities & Garbage Chute
- Ramp for Handicapped
- Children Play area/Party area

A WORLD OF
EXCELLENCE

ORIENT
apex
LUXURY LIVING

charming blend of elite *Living*

Rising above the square mile, offering spectacular view and an unsurpassed location, Orient Apex are homes without compromise.

The unique combination of vibrant surroundings, extremely high quality construction standards and a professional approach sets apart **ORIENT APEX** for high-end living.





grand Entrance

Effortless is the word that has informed every design decision. The Grand Entrance is an example of the finest in the Luxury Living. Designed for the true connoisseurs of indulgence, Orient Apex Homes are classical on the outside and modern on the inside with an unmatched living environment.



enter
an unrivalled *U*rban oasis



THE LOCATION

(Map not to scale)



Site Address : Orient Apex, Balaji Maket, Near Ghatotkaksha Circle, Kota (Raj.)

ADVANTAGES OF LOCATION & CONNECTIVITY

- Prestigious learning centres & Schools located within a 5km Radius.
- Primary Healthcare & Diagnostic Centre within walking distance of your home.
- Centrally located in New Kota at Ghatotkaksha Circle.
- Well Developed Commercial & Residential Area
- Dakaniya Railway Station - 3.5 km.
- Surrounded by prestigious commercial projects and shopping centres for day to day requirement.

an ultimate architectural statement

ORIENT
apex
LUXURY LIVING

The homes at Orient Apex are designed combining a distinctive look, immaculate planning and stunning landscapes. This aesthetic sense of beauty makes its presence felt right from entrance of the complex with an alluring luxurious aura. The windows frame gorgeous views of landscaped gardens.



SPACIOUS LIVING ROOM



*the essence
of fine Living*

Your living room is your signature. At Orient Apex, exquisite materials and contemporary design come together to create lavish living spaces. The gorgeous apartments are spaciouly designed and truly unique with large-sized windows, wooden and vitrified tiles.



COZY BEDROOM

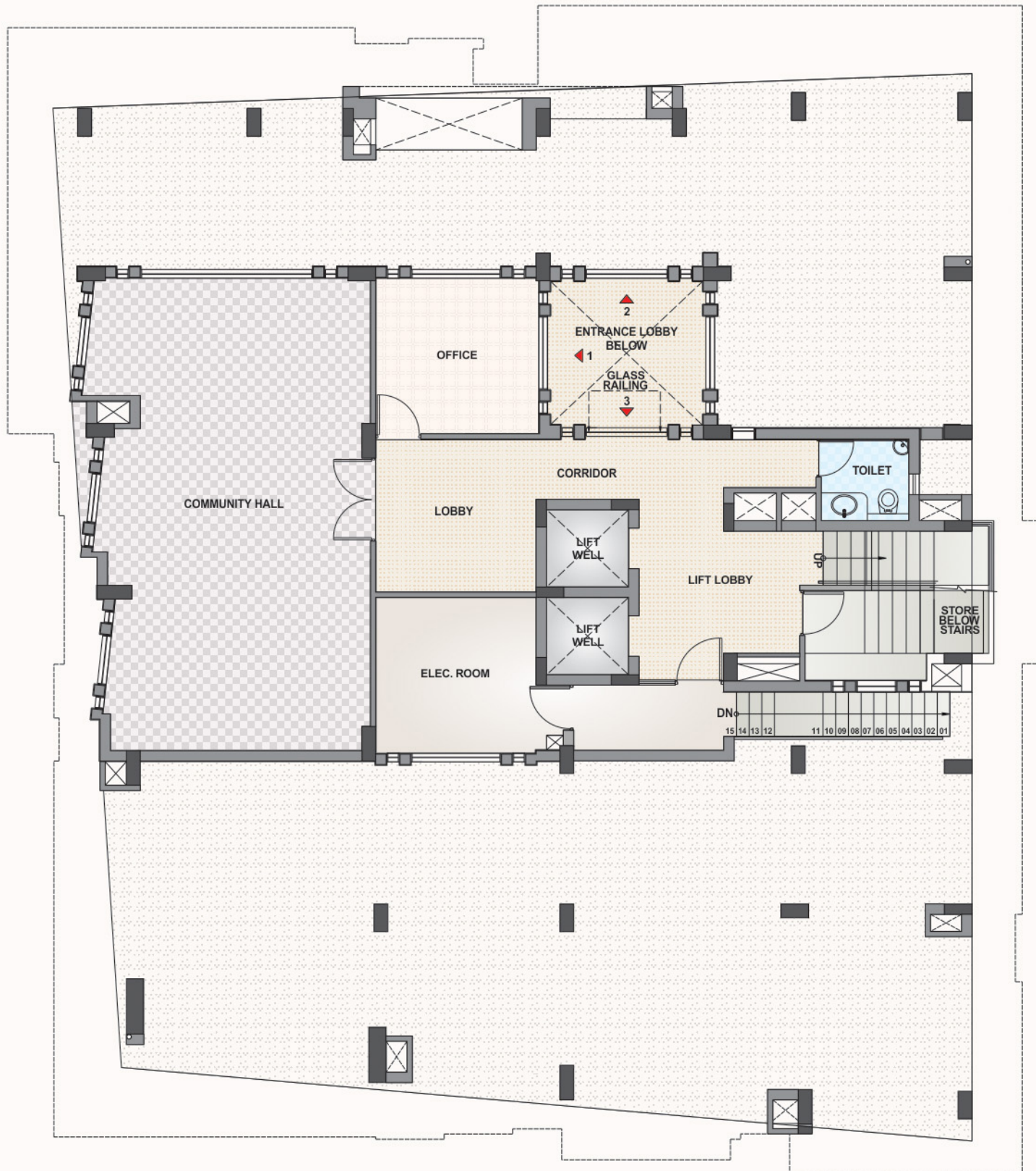
Indulge in luxurious comfort

Bedrooms often double up as your private retreat. Luxurious wooden flooring and exquisite craftsmanship create the ideal concoction for your personal getaway. Add to it a contemporary design and impeccable finish.

MEZZANINE FLOOR

BLOCK LAYOUT

Community Hall, Below Entrance Lobby & Office



GROUND FLOOR

BLOCK LAYOUT

Open & Mechanical Parking with Landscaping



1st AND 2nd FLOOR BLOCK LAYOUT

TYPICAL FLOOR | 2 BHK / 3 BHK FLAT LAYOUT



3rd TO 5th FLOOR

BLOCK LAYOUT

TYPICAL FLOOR | 2 BHK / 3 BHK FLAT LAYOUT



6th FLOOR BLOCK LAYOUT

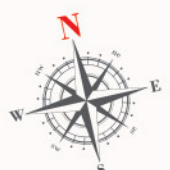
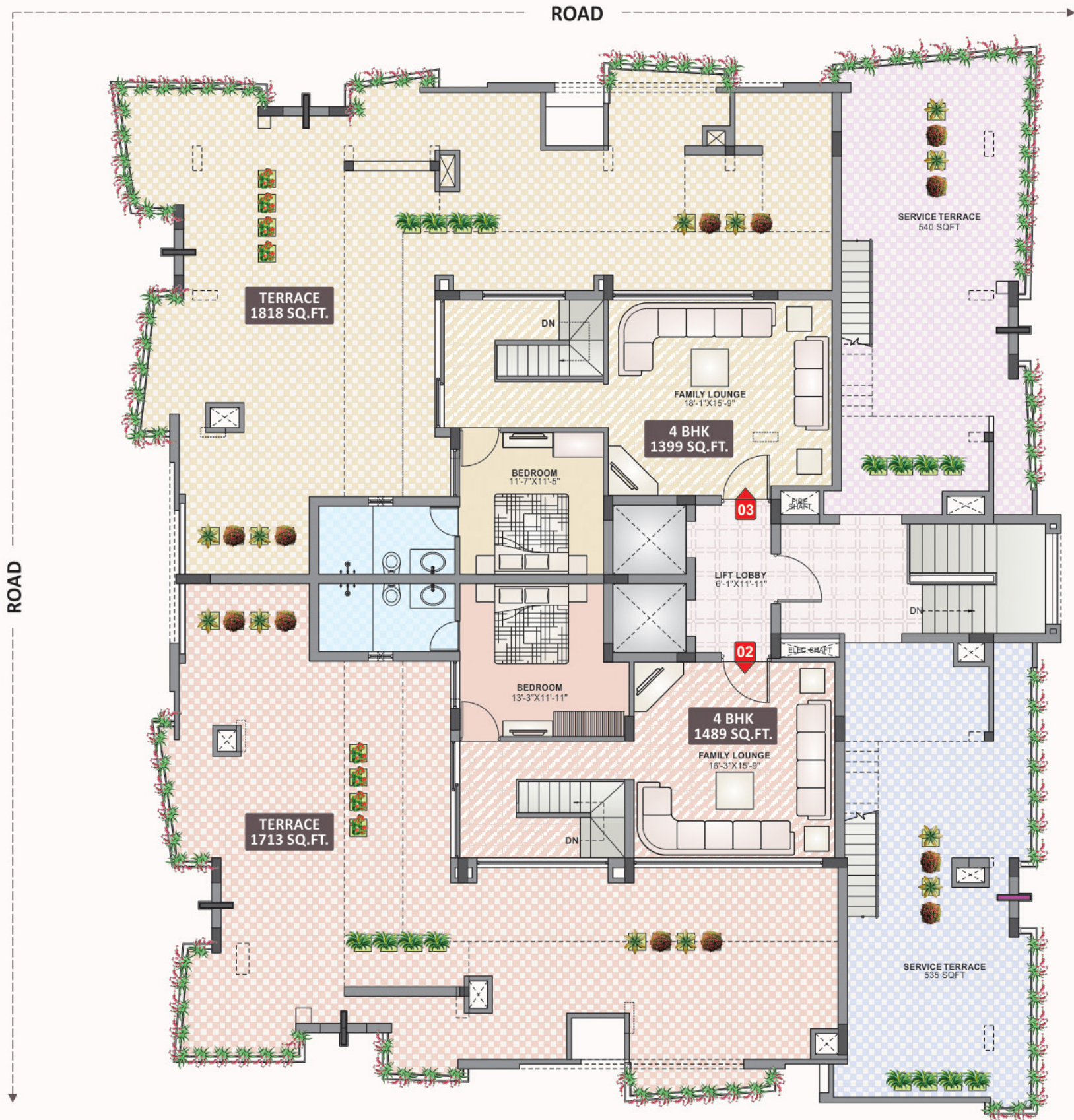
LOWER PENTHOUSE | 2 BHK FLAT LAYOUT



TERRACE AREA

BLOCK LAYOUT

7th FLOOR | UPPER PENTHOUSE

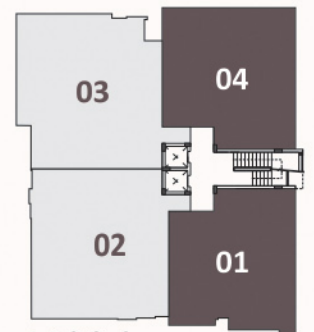


2 BHK TYPICAL ISOMETRIC VIEW

1st AND 2nd FLOOR



Flat No.	Saleable Area
04	1582 SQ.FT.
01	1484 SQ.FT.



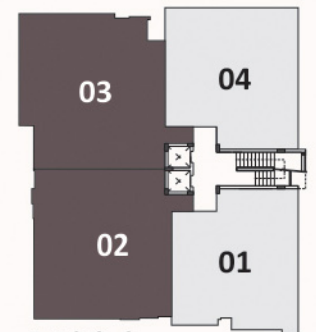
1st & 2nd
FLOOR KEY PLAN

3 BHK TYPICAL ISOMETRIC VIEW

1st AND 2nd FLOOR



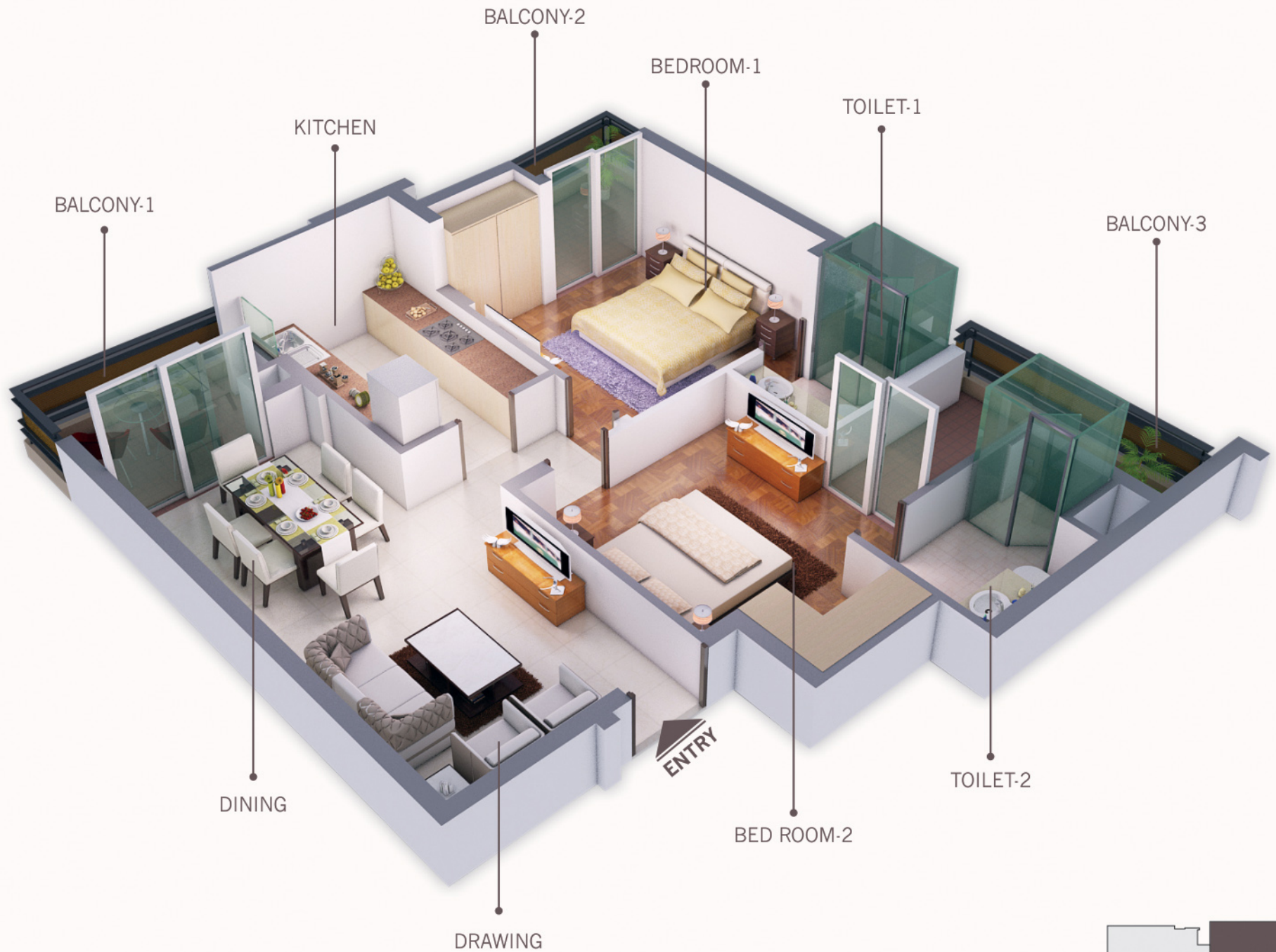
Flat No.	Saleable Area
03	2052 SQ.FT.
02	1954 SQ.FT.



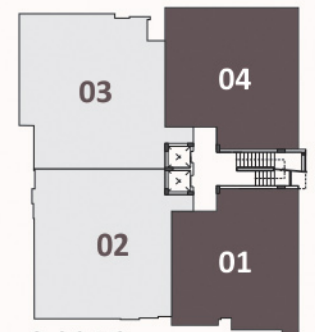
1st & 2nd
FLOOR KEY PLAN

2 BHK TYPICAL ISOMETRIC VIEW

3rd TO 5th FLOOR



Flat No.	Saleable Area
04	1497 SQ.FT.
01	1529 SQ.FT.

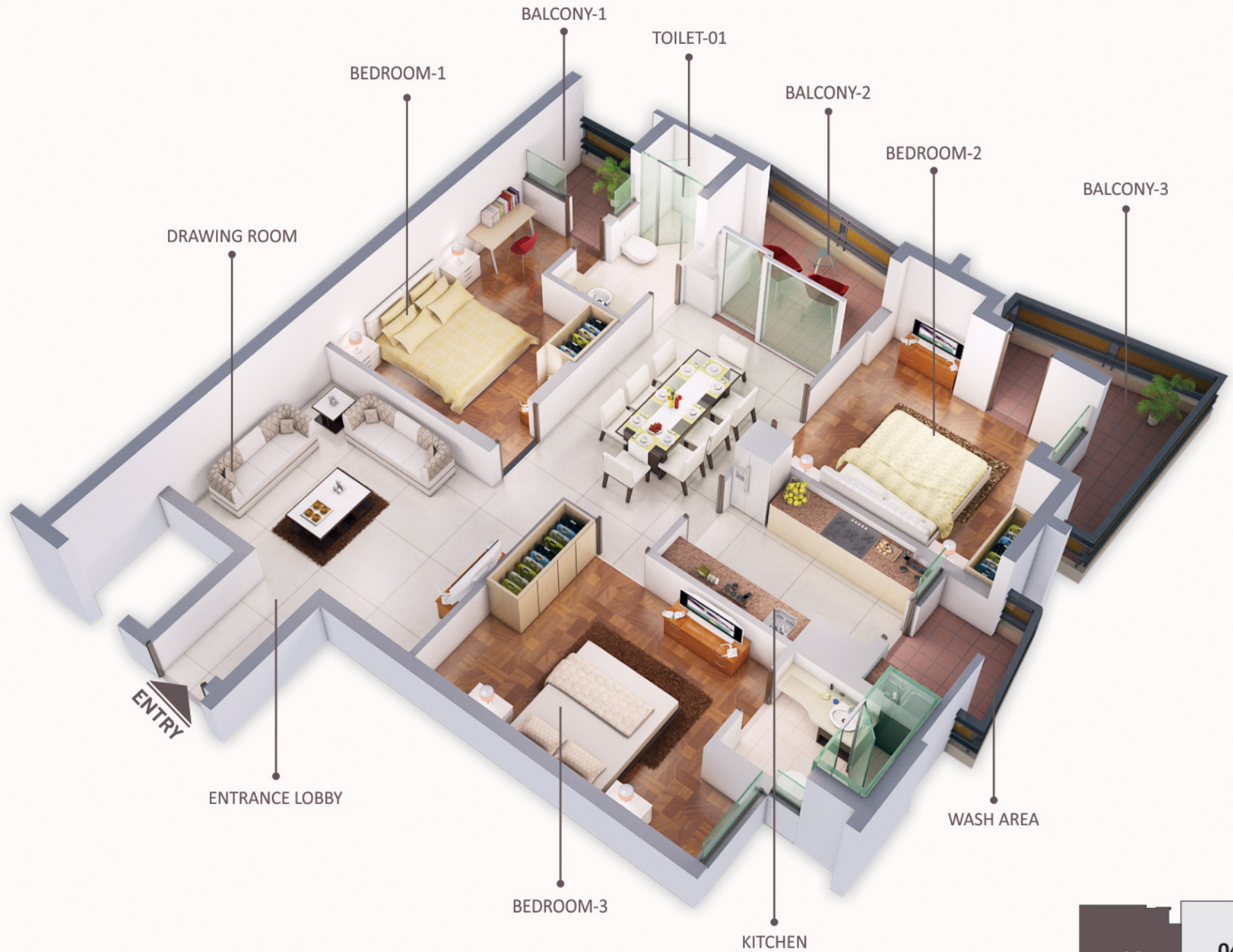


3rd & 5th
FLOOR KEY PLAN

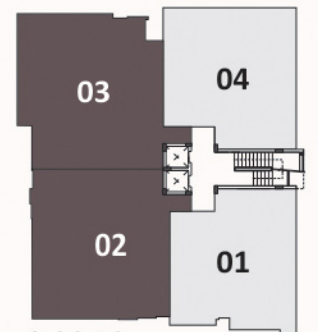
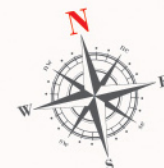
3 BHK TYPICAL

ISOMETRIC VIEW

3st TO 5nd FLOOR



Flat No.	Saleable Area
03	1910 SQ.FT.
02	1980 SQ.FT.



3rd & 5th
FLOOR KEY PLAN



R.C.C. & WALLS

- ✦ R.C.C. : Structure as per Seismic Zone
- ✦ External Walls : Durable Textured & Roller Finish with Sand Stone/Granite cladding
- ✦ Internal Walls : P.O.P. Finish / Acrylic emulsion Paint



LIVING ROOM / PASSAGE / DINING / BEDROOMS

- ✦ Flooring : Premium Brand Vitrified Tiles (RAK/equivalent)
- ✦ Doors : 7'6" High decorative main door and 7'6" high flush with water Cut paint finished in bed rooms.
- ✦ Hardware : Premium Quality
- ✦ Wall Finishes : Gypsum/POP Plaster with Luster paint in living, dining, passage and acrylic distemper paint in all bed rooms.
- ✦ Windows : UPVC Windows with Tinted Glass & MS Grill from inside
- ✦ Master Bed Floorings : Premium brand Vitrified Tiles
- ✦ Light Fittings : Premium Quality
- ✦ External Finish : Textured Paint with Sand Stone/Granite Cladding



TOILETS

- ✦ Floorings : Premium Brand Ceramic Tiles
- ✦ Dado : Premium Brand Vitrified Tiles/Ceramic Tiles
- ✦ Counter : Granite Counter with Under mount Sink
- ✦ C.P. Fittings : Premium Quality fittings (Jaquar/ equivalent)
- ✦ Sanitary Ware : Premium quality fittings
- ✦ WC : Wall Hung WC with Concealed Cistern
- ✦ Shower Area : Toughen Glass cubical Partition in one toilet
- ✦ Doors : 7'6" high waterproof flush door with water cut paint finish & Mica finished inside
- ✦ Ceiling : Gypsum/ POP Plaster with luster paint finish



KITCHEN

- ✦ Flooring : Premium Brand Vitrified Tiles
- ✦ Platform : 1-1/2" Laminated Full Molding Granite Counter top with under mount Sink
- ✦ Dado : Premium Brand Vitrified Tiles/Ceramic Tiles
- ✦ Gas Pipe : Direct Gas Pipe fittings



KITCHEN

- ✦ Flooring : Premium Brand Vitrified Tiles
- ✦ Platform : 1-1/2" Laminated Full Molding Granite Counter top with under mount Sink
- ✦ Dado : Premium Brand Vitrified Tiles/Ceramic Tiles
- ✦ Gas Pipe : Direct Gas Pipe fittings



WINDOWS

- : UPVC Windows with Tinted Glass & MS Grill inside.



INTERCOM SYSTEM

- : Intercom in living and central intercom system with security and Flat to Flat



SECURITY SYSTEM

- : Magnetic Door Alarm, CTV, Video door Phone



ELECTRICAL

- ✦ Phase : 3 Phase Connection
- ✦ Wiring : R/R Cable/Finolex in high density Conduits & Gloster Wiring in All flats
- ✦ Switches : Modular ISI Switches
- ✦ Light, Fans etc. : As per layouts with generators facilities for common areas.
- ✦ Exhaust Fan : Kitchen & all Toilets



ELEVATORS

- : High Speed reputed brand automatic elevators for 6-8 people



GROUND FLOOR

- ✦ Lobby : Grand Entrance Lobby with Granite, Vitrified & Imported Marble
- ✦ Flooring : Stone Cobble Pavers
- ✦ Party/Children Play Area : Enclosed by low wall, separate from driveway

WHERE EXCLUSIVITY OPEN OUT TO ABUNDANCE

If you are looking for enriching lifestyle coupled with rewarding amenities, you know your mind has brought you to the right place.



O R I E N T

the
group

Builders & Developers



www.orientgroup.com

A GROUP WITH A 40 YEAR TRADITION OF EXCELLENCE,
IS YOUR ASSURANCE OF QUALITATIVE AND RELIABILITY.

to envisage the future. To set a goal, to chase it, steadily. To Accomplish it, against all odds, This was the ideology. This was the belief. This was the philosophy that started it all. The year was 2005, when we entered the real estate business in Rajasthan with ths new found vision to explore the potential opportunities and possibilities in real estate. We envisioned a new dawn where revolutionary structure and iconic towers dominate the skylines and lifestyles that redefine life itself. We are driven by a passion to create iconic developments that bear that mark of flawless construction, exemplifying outstanding sense of planning and design in all its real estate endeavors.

We believe in creating spaces that inspire life, spaces that infuse life and energy into those lives who want to be a part of a better tomorrow. Whether it is architecture, design, conceptualizing residences or commercial townships, Orient Builders has the wherewithal, talent, expertise, experience and the financial strengthen to make it happen. We aim to be recognized as an avant-grade in the dynamic realty sector, through innovation in our ongoing and upcoming projects combined with an emphasis on contemporary architecture, strong project execution and quality construction that helped us transform into a brand to reckon with. Every Orient Builder's project has a unique themes with a distinct aesthetic appeal comprising a myriad style. From planning to sourcing materials, engineering expertise to artistic skills, all projects are a class apart.

Today with myriad landmark projects and still counting, we are known as ORIENT BUILDERS, a real estate company with a reputation of introducing many firsts.

40
years
TRADITION of
EXCELLENCE

SOME OF OUR COMPLETED PROJECTS



ORIENT BRIJ
Pratap Nagar, Kota



ORIENT RESIDENCY
Pratap Nagar, Kota



ORIENT GARDENS
Vardhadam Road, Talera



ORIENT ARCADE
Pragathi Pathi, Bhilwara



ORIENT PREM
Shakti Nagar, Dadabari, Kota



ORIENT PRIME
Vallabh Nagar, Kota

UPCOMING PROJECTS



ORIENT HEIGHT
Nainva Road, Bundi



ORIENT LAKEVIEW APARTMENTS
Sarovar Road, Kota



(SWAN INDUSTRIES PVT. LTD.)

Branch Office : 54, Udyog Marg, DCM Road, Kota - 324 007 (Raj.) INDIA | T : 0744-2366079 / 2366092 | F : 0744-2363403

Regd. Office : 106, Navjeevan Chambers, G-4, Vinoba Marg, C-Scheme, Jaipur-302 001 (Raj.) INDIA

Call for assistance : +91 94141 77642 | E-mail : swaninfo@gmail.com | Website : www.orientbuilders.in

Architects : Metricchant Designers and Architects Pvt. Ltd. | www.metricchants.com

Disclaimer : This brochure is for illustration purpose only and it cannot be in any way treated as a legal document. Builders and Developers reserve the right to change any design and specification of the building without any prior notice and information. All information, specifications, plans, material and visual representations contained in the brochure, model & sample flat are subject to change from time to time by the developer and / or the competent authorities and shall not form part of the offer or contract.

Zenith of premier high-end living

ORIENT
apex 
LUXURY LIVING

Site Address : Orient Apex, Balaji Maket, Near Ghatotkaksha Circle, Kota (Raj.)